

# AminoShure®-XL

## Precision Release Lysine

Utilizing Balchem's revolutionary X-technology, AminoShure®-XL Precision Release Lysine contains approximately 35% more metabolizable lysine than the leading competitor and is designed to consistently, reliably and economically meet the amino acid requirements of lactating dairy cattle, giving it a competitive edge over blood meal and other lysine sources.

AminoShure-XL is the result of many years of research focused on delivering the essential benefits required for maximizing dairy cow productivity and profitability.



### Guaranteed Minimum Analysis:

L-Lysine HCl (Minimum) .....65%

### Typical Analysis:

L-Lysine HCl..... 67.5%

L-Lysine ..... 54.0%

Metabolizable Lysine ..... 34.6%

### Application:

Feed to dry and lactating dairy cattle to help meet their lysine requirement. Lysine is required to create diets that provide optimum levels of metabolizable lysine for increased production of milk and milk components.

### Ingredients:

L-Lysine HCl, Hydrogenated Vegetable Oil

### Feeding Recommendation:

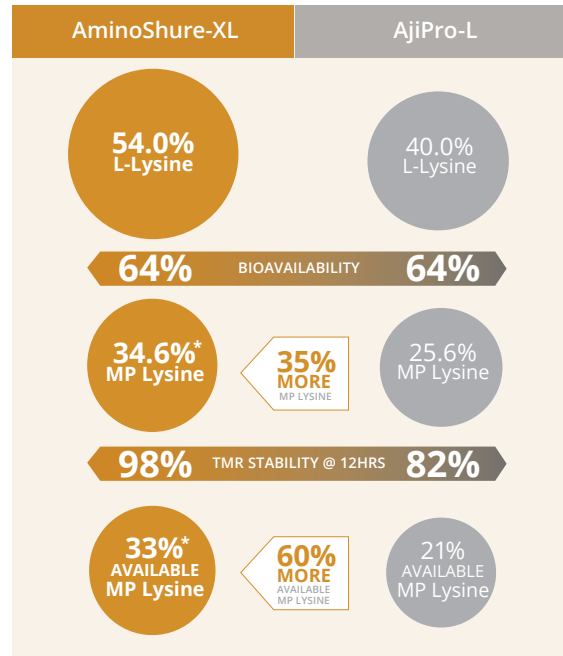
Feed 15-80 g/cow/day of AminoShure-XL to meet the cow's MP lysine requirement for increased milk production and components.

### Packaging:

25 kg poly-lined bags

### Recommended Storage:

Store in a clean, dry environment. Protect from heat. Do not exceed 120°F (50°C). Recommended storage temperature is 50-90°F (10-32°C).



\*Stable Isotope method, Fernandes et al., 2024  
The bioavailability parameters are based on each manufacturer's bioavailability claims and content declarations.

AMINOSHURE®-XL PRECISION RELEASE LYSINE



## Benefits:

AminoShure®-XL represents more than a decade of dedicated research aimed at maximizing dairy cow productivity and profitability. The result is a new and improved AminoShure-XL that contains approximately 35% more metabolizable lysine than the leading competitor.

- **Consistent** – AminoShure-XL uses Balchem’s X-technology to deliver a consistent supply of MP lysine to the cow, effectively solving the issue of inconsistency associated with other sources of lysine like blood meal.
- **Reliable** – AminoShure-XL adheres to the highest quality standards and developmental protocols, ensuring exceptional performance and reliability.
- **Cost-Effective** – AminoShure-XL’s enhanced bioavailability provides a consistent, reliable and less expensive source of metabolizable lysine, reducing both ration costs and variability while improving cow productivity. These advantages make it possible to effectively replace blood meal in dairy diets, helping dairy farmers to achieve greater and more consistent economic returns.

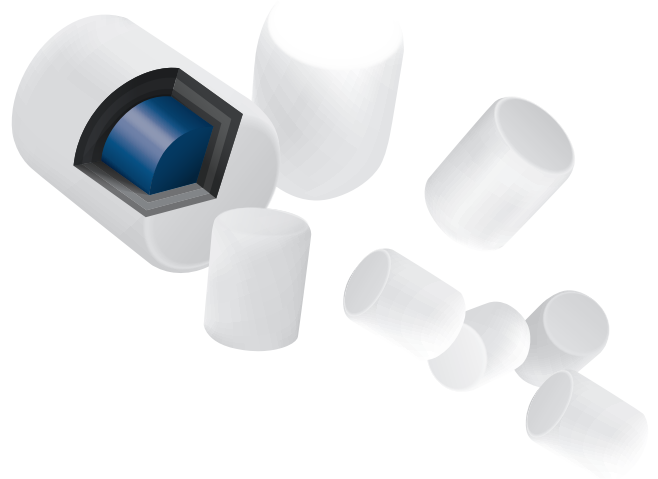
## About Balchem:

Balchem Animal Nutrition & Health is the global leader in choline production, chelation and encapsulation technology. With a growing portfolio of nutrition products and a dedication to innovation and industry sustainability, Balchem is leading the charge to meet the nutritional needs of ruminants, monogastrics and companion animals. The company consists of three business segments: Human Nutrition & Health; Animal Nutrition & Health; and Specialty Products. Balchem employs over 1,400 people worldwide who are engaged in diverse activities, committed to developing the company into global market leadership positions.

## Economics:

Research shows that diets balanced for amino acids can deliver:

- Approximately 4 pounds more milk/cow/day
- Increased milk component yield
- Improved feed efficiency
- Better nutrient utilization
- Reduced nitrogen excretion



### Balchem ANH – Americas Region

Balchem Corporation  
5 Paragon Drive  
Montvale, NJ 07645  
Tel: 845-326-5600  
Fax: 845-326-5615

Email: [ANH.Marketing@balchem.com](mailto:ANH.Marketing@balchem.com) | Website: [Balchem.com](http://Balchem.com)  
©2024 Balchem Corporation. All rights reserved.  
2406-019 | 2024.17.7